

# RAPTIM CARE

Powered by Charter Solutions

- Protect your people while they travel with Raptim Care.
- With advances in technology and increased mobility, it is becoming more convenient to maintain a responsible travel management program.
- Your travelers must be protected in situations ranging from airline delays to serious political and medical outbreaks. It is not only a duty but a moral and ethical responsibility.

## RAPTIM CARE - CORE

We recognize that a product to address “Duty of Care” is a priority for our clients. The responsibility for the welfare of travelers is of the utmost importance for Raptim. All our valued clients are monitored by Raptim through our Raptim Care – Core offering.

### Pre-Travel Advisories (PTAs)

Distributed within 8 days of travel to all email addresses within a reservation for high or extreme risk level countries.

### Risk Alerts

Distribution within 4 days of travel or if in affected region to all email addresses within a reservation for high or extreme level incidents.

Risk Alerts Include:

#### Political Developments

- Protest to take place at Independence Hill in Belmopan Sept 19.

#### Conflict and Terrorism

- Police make terrorism related arrest at LHR.

#### Demonstrations and Unrest

- Authorities announce month-long ban on demonstrations in Harare.

#### Crime and Corruption

- Authorities make arrest after deadly attack at rally in Helsinki.

#### Natural and Environmental

- Typhoon Malakas to make landfall in Kagoshima Prefecture on Sept 20.

#### Health and Medical

- Authorities confirm new MERS-CoV case in Riyadh.

#### Travel Safety and Disruptions

- Roads remain closed following explosion in Manhattan.

From: raptimcare.noreply@raptim.org

Sent: Saturday, November 12, 2016 5:12 AM

To: Our valued partners

Subject: EXTREME: TURKEY: Turkish airstrikes target IS positions in northern Syria

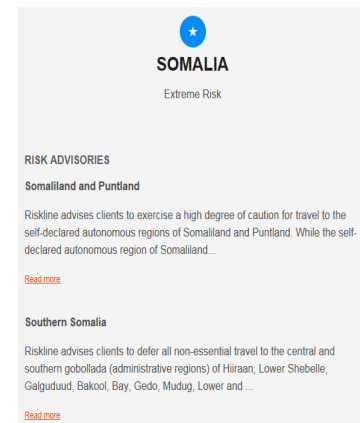
TURKEY: Turkish airstrikes target IS positions in northern Syria

A Turkish military spokesperson announced that at least 18 suspected Islamic State (IS) militants were killed and a number of buildings destroyed after Turkish fighter jets carried out a series of airstrikes on IS positions in an undisclosed area in northern Syria on 11 November.

ADVICE: Defer all travel to Syria. Visitors face an extreme risk of arbitrary detention and bodily harm. The alert is of EXTREME risk and issued for 12/11/2016 until 13/11/2016

### Pre-Travel Advisories (PTA's)

Distributed within 8 days of travel to all email addresses in reservation for high or extreme risk level countries.



**COMPASSION  
MATTERS.**

# RAPTIM CARE

Powered by Charter Solutions

- Protect your people while they travel with Raptim Care.
- With advances in technology and increased mobility, it is becoming more convenient to maintain a responsible travel management program.
- Your travelers must be protected in situations ranging from airline delays to serious political and medical outbreaks. It is not only a duty but a moral and ethical responsibility.

## **RAPTIM CARE - CONVENIENCE**

We recognize that a product to address “Duty of Care” is a priority for our clients. The responsibility for the welfare of travelers is of the utmost importance for Raptim. All our valued clients are monitored by Raptim through our Raptim Care – Convenience offering.

### Pre-Travel Advisories (PTAs)

Distributed on a custom time frame to all email addresses in reservation for the risk level of customers choice. May opt to turn off PTA's.

### Risk Alerts

Distributed on a custom time frame to all email addresses in reservation and/or custom distribution list for the risk level of customers choice.

Risk Alerts Include:

#### Political Developments

- Protest to take place at Independence Hill in Belmopan Sept 19.

#### Conflict and Terrorism

- Police make terrorism related arrest at LHR.

#### Demonstrations and Unrest

- Authorities announce month-long ban on demonstrations in Harare.

#### Crime and Corruption

- Authorities make arrest after deadly attack at rally in Helsinki.

#### Natural and Environmental

- Typhoon Malakas to make landfall in Kagoshima Prefecture on Sept 20.

#### Health and Medical

- Authorities confirm new MERS-CoV case in Riyadh.

#### Travel Safety and Disruptions

- Roads remain closed following explosion in Manhattan.

### Pre-Travel Advisories (PTA's)


Distributed on a custom time frame to all email addresses in reservation for the risk level of customers choice. May opt to turn off PTA's.

From: raptimcare.noreply@raptim.org  
Sent: Saturday, November 12, 2016 5:12 AM  
To: Our valued partners  
Subject: EXTREME: TURKEY: Turkish airstrikes target IS positions in northern Syria

TURKEY: Turkish airstrikes target IS positions in northern Syria

A Turkish military spokesperson announced that at least 18 suspected Islamic State (IS) militants were killed and a number of buildings destroyed after Turkish fighter jets carried out a series of airstrikes on IS positions in an undisclosed area in northern Syria on 11 November.

ADVICE: Defer all travel to Syria. Visitors face an extreme risk of arbitrary detention and bodily harm The alert is of EXTREME risk and issued for 12/11/2016 until 13/11/2016

  
**SOMALIA**  
Extreme Risk

#### RISK ADVISORIES

##### Somaliland and Puntland

Riskline advises clients to exercise a high degree of caution for travel to the self-declared autonomous regions of Somaliland and Puntland. While the self-declared autonomous region of Somaliland...

[Read more](#)

##### Southern Somalia

Riskline advises clients to defer all non-essential travel to the central and southern gobollada (administrative regions) of Hiraaan, Lower Shebelle, Galguduud, Bakool, Bay, Gedo, Mudug, Lower and ...

[Read more](#)



**COMPASSION  
MATTERS.**

www.raptim.org

# RAPTIM CARE

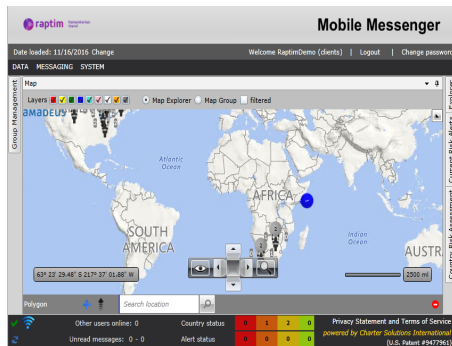
Powered by Charter Solutions

- Protect your people while they travel with Raptim Care.
- With advances in technology and increased mobility, it is becoming more convenient to maintain a responsible travel management program.
- Your travelers must be protected in situations ranging from airline delays to serious political and medical outbreaks. It is not only a duty but a moral and ethical responsibility.

## RAPTIM CARE - CHOICE

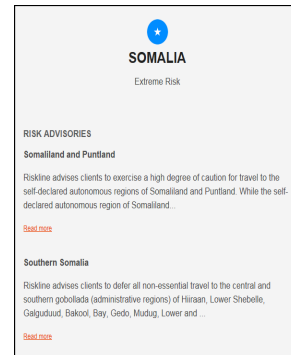
### Map Tool

- Login given to specific contacts within the organization
  - Visual identify where travelers are located
  - Initiate email/push messages to travelers
    - Locate travelers via app
    - Reporting capabilities



### Pre-Travel Advisories (PTA's)

Distributed on a custom time frame to all email addresses in reservation for the risk level of customers choice.  
May opt to turn off PTA's.



### Risk Alerts

Distributed on a custom time frame all email addresses in reservation and/or custom distribution list for the risk level of customers choice. Email addresses on custom distribution list will receive a list of potentially affected travelers.

From: [raptimcare.noreply@raptim.org](mailto:raptimcare.noreply@raptim.org)  
 Sent: Saturday, November 12, 2016 5:12 AM  
 To: Our valued partners  
 Subject: EXTREME: TURKEY: Turkish airstrikes target IS positions in northern Syria

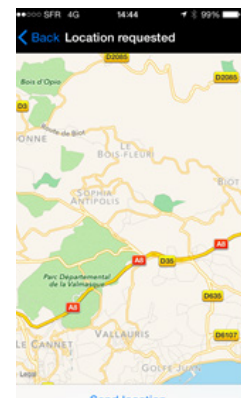
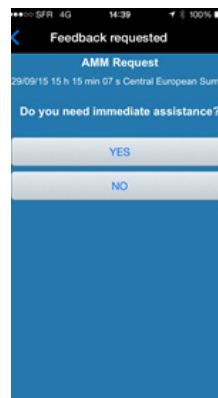
TURKEY: Turkish airstrikes target IS positions in northern Syria

A Turkish military spokesperson announced that at least 18 suspected Islamic State (IS) militants were killed and a number of buildings destroyed after Turkish fighter jets carried out a series of airstrikes on IS positions in an undisclosed area in northern Syria on 11 November.

ADVICE: Defer all travel to Syria. Visitors face an extreme risk of arbitrary detention and bodily harm. The alert is of EXTREME risk and issued for 12/11/2016 until 13/11/2016. Amount of itinerary potentially affected (estimate):  
 13/11/2016: 3  
 SMITH RACHEL ( AMADEUS-12345AB)  
 JONES KEVIN ( AMADEUS-12346CB)  
 THOMPSON SALLY ( AMADEUS-12347ZY)

### Push Messages (Choice ONLY)

- Works on both iPhone and Android devices. (Examples are iPhone view)
- Does not work on Microsoft phones
- Feedback Requested



COMPASSION  
MATTERS.